



**A FORTIS COMPANY**

Belize Electricity Limited  
2 ½ Miles Northern Highway  
P.O. Box 327  
Belize City, Belize  
Corporate Tel.: 501-227-0954  
Customer Care: 0-800-235-2273  
Fax: 501-223-0891  
Email: [pr@bel.com.bz](mailto:pr@bel.com.bz)  
Website: [www.bel.com.bz](http://www.bel.com.bz)

Immediate Release: **Monday, September 28, 2009**

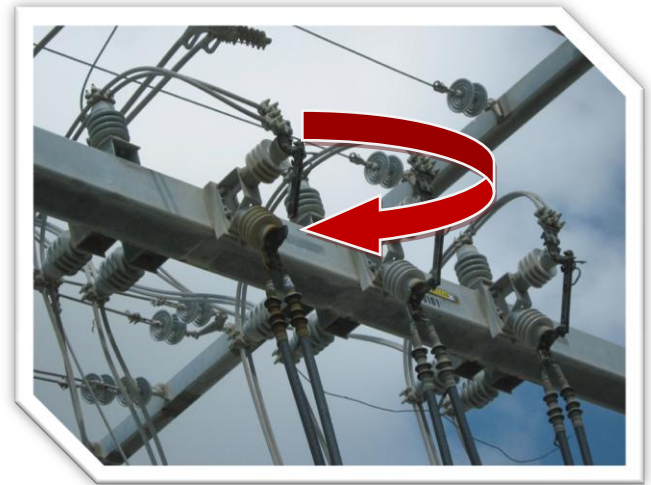
Contact: Dawn Sampson-Nuñez

E-mail: [Dawn.Sampson@bel.com.bz](mailto:Dawn.Sampson@bel.com.bz)

## **BEL Restores Power to Belize City Following Emergency Outage to Conduct Substation Repairs**

At 4:19 p.m. today, power supply was restored to Belize City, following an emergency power outage, which commenced at 12:16 p.m.

The power outage became necessary after a switch at the Belize City Substation burnt, which caused a power outage to portions of the city at 9:16 a.m.. This substation serves the entire Belize City. When in working condition, the switch facilitates isolation of equipment in the substation. This allows BEL to work on sections of the substation without the need for a power outage to the entire Belize City. However, with the burnt switch, it became necessary to shut down the entire substation to facilitate repairs.



**Burnt Switch at Belize City Substation**

Investigations have confirmed that the switch likely burnt as a result of overheating.

The power outage affected all of Belize City up to Mile 3 on the Western Highway and Mile 1½ along the Northern Highway.

BEL had to postpone several of its projects when it ran into financial difficulties last year and could not get approval for its capital programs. BEL apologizes for the inconveniences as it seeks to restore the integrity of its systems.

END