



BELIZE ELECTRICITY LIMITED

2½ Miles Philip Goldson Highway | P.O. Box 327 | Belize City, Belize
Corporate: +501.227.0954 | Customer Care: 0.800.235.2273 | Fax: +501.223.0891

November 3, 2016

BEL Locates Fault Responsible for San Pedro Power Interruption

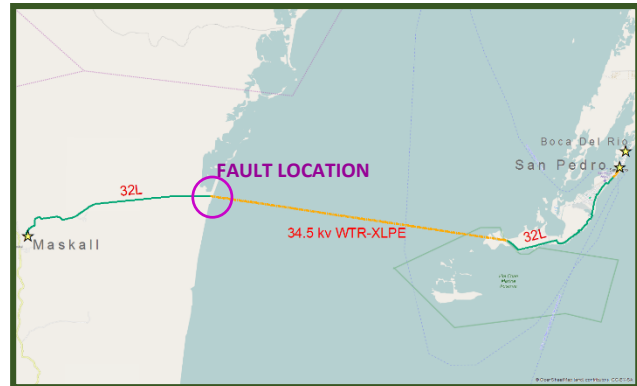
A few hours prior to daybreak today, Belize Electricity Limited (BEL) crews completed their search for the cause of a power interruption that affected entire San Pedro Town for over 7 hours, starting 8:59 p.m. last night.

San Pedro Town, Ambergris Caye is connected to the national electricity grid via a submarine power cable which enters the sea from the Belize District coastline, originating at the Maskall Substation.

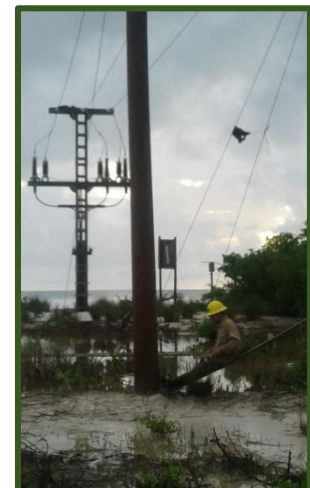
This section of the power system traverses remote, swampy terrain that is inaccessible by road. Efforts by BEL crews to identify the fault responsible for the power interruption required overcoming the challenging terrain, unstable weather condition and intermittent availability of communication in the area.

Shortly before 4:00 a.m. the fault was found on a terminal structure located along the Belize District coastline where the power line transitions from overhead to submarine. Thereafter, the fault was rectified and power supply was restored to San Pedro.

BEL apologizes for the inconvenience of this power interruption, as the Company continues to diligently find ways of improving its service to customers on the island.



Power supply system from Maskall to San Pedro (above) and terminal structure where submarine power cable enters the sea to supply San Pedro (below).



-END-